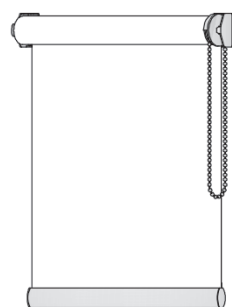
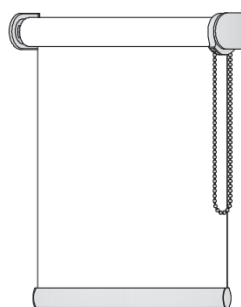




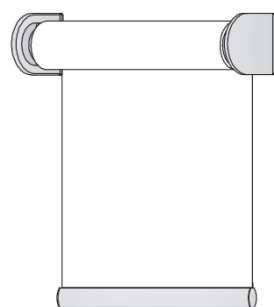
# FUTURO FILTRANTE



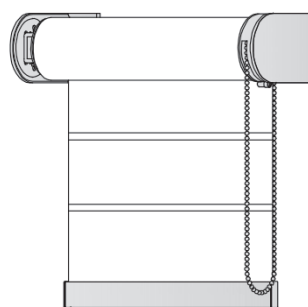
RULLO XS  
A CATENA O MOLLA



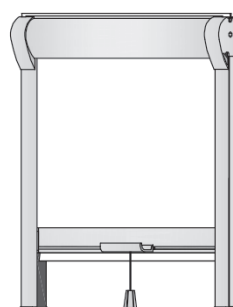
RULLO A CATENA  
CON O SENZA  
CASSONETTO



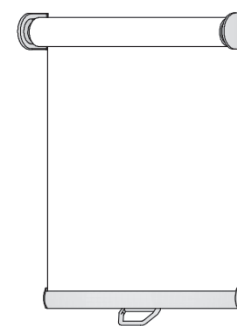
RULLO A MOTORE  
CON O SENZA  
CASSONETTO



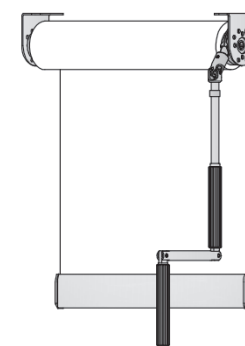
RULLO 70 XL  
A CATENA O MOTORE  
CON O SENZA  
CASSONETTO



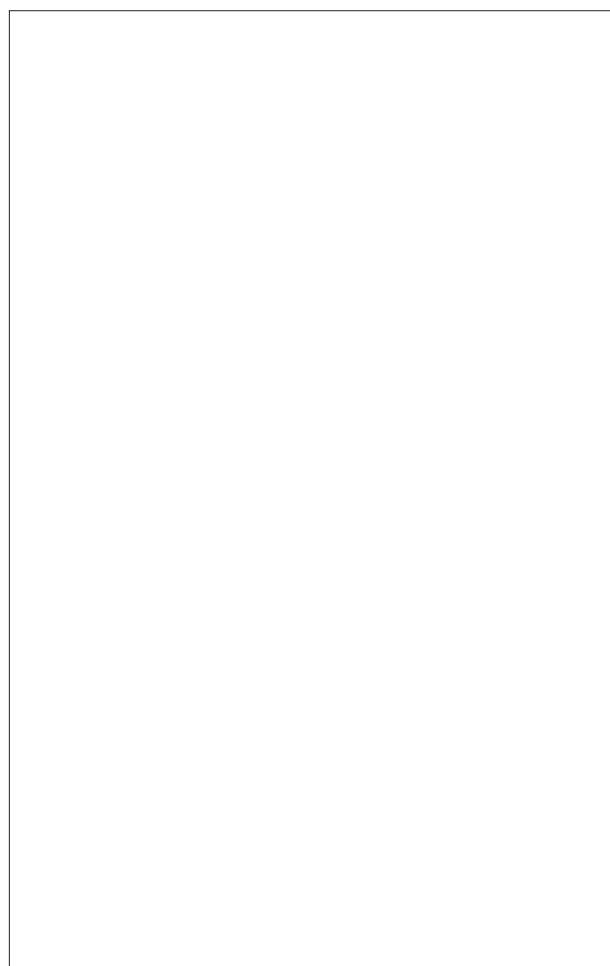
LOOK IN  
A MOLLA O CATENA



RULLO A MOLLA  
CON O SENZA  
CASSONETTO



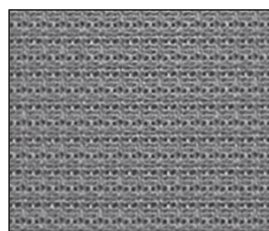
RULLO AD ARGANELLO  
CON O SENZA  
CASSONETTO



**CU.002**  
Bianco



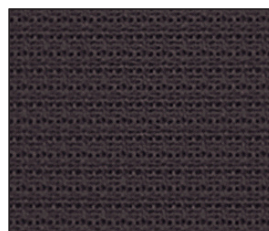
**CU.093**  
Grigio chiaro



**CU.086**  
Grigio



**CU.089**  
Antracite



**CU.090**  
Marrone

# FUTURO FILTRANTE

## DESCRIZIONE MATERIALE

Description of the material  
Beschreibung des Materials

100 % BOTTIGLIA IN PLASTICA RICICLATA  
100 % Recycled PET bottles  
100 % Recycled PET bottles

## PESO (g/mq.)

Weight (g/mq.)  
Gewicht (g/mq.)

223 ca.

## SPESSORE (mm.)

Thickness (mm.)  
Dicke (mm.)

0,53 ca.

## LARGHEZZA TESSUTO

Fabric width  
Stoffbreite

250 cm. - 320 cm.

## COMPORAMENTO ALLA FIAMMA

Fire reaction  
Feuerverhalten

IGNIFUGO CLASSE 1  
Class 1 fire-retardant  
Feuerhemmend Klasse 1



## MANUTENZIONE

Maintenance  
Wartung

PULIRE CON PANNINO UMIDO  
Clean with damp cloth  
Mit einem feuchten Lappen reinigen

## FATTORE DI APERTURA

Openness factor  
Faktor von Öffnung

± 3%



INDOOR  
comfort



EASY  
maintenance



ENERGY  
saving



LEAD  
FREE

## COMPORAMENTO AL CALORE

Behaviour to the heat  
Warmereflektion

| COLOR ± 2% | R ** | T ** | A ** |
|------------|------|------|------|
| CU.002     | 60,4 | 34,2 | 5,4  |
| CU.093     | 46,2 | 26   | 27,8 |
| CU.086     | 37,2 | 21,1 | 41,7 |

\*\* R= Riflessione; T= Trasmissione; A= Assorbimento

## COMPORAMENTO AL CALORE

Behaviour to the heat  
Warmereflektion

| COLOR ± 2% | R ** | T ** | A ** |
|------------|------|------|------|
| CU.089     | 32,2 | 17,9 | 49,9 |
| CU.090     | 30,8 | 17,4 | 51,8 |