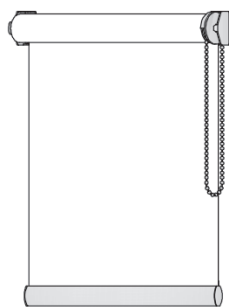


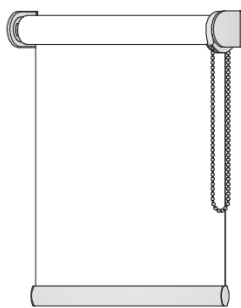
USO INTERNO

# GIRASOLE OSCURANTE

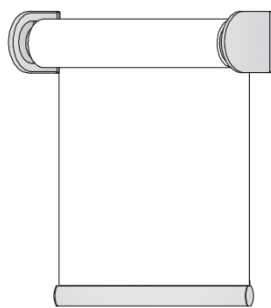
GIRASOLE  
oscurante



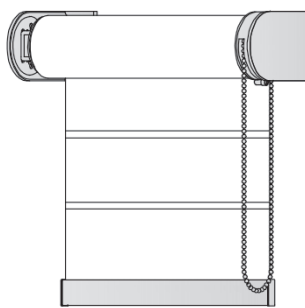
RULLO XS  
A CATENA O MOLLA



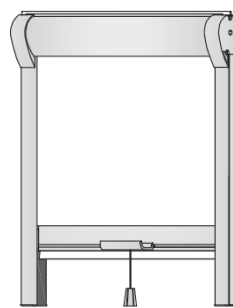
RULLO A CATENA  
CON O SENZA  
CASSONETTO



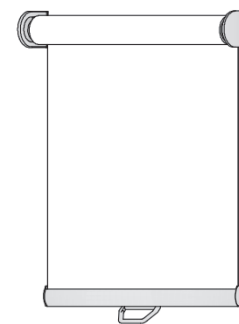
RULLO A MOTORE  
CON O SENZA  
CASSONETTO



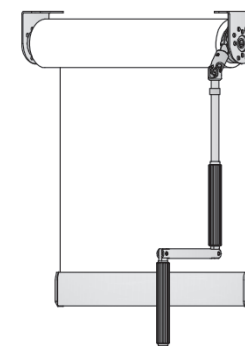
RULLO 70 XL  
A CATENA O MOTORE  
CON O SENZA  
CASSONETTO



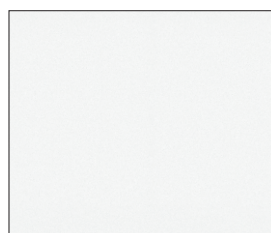
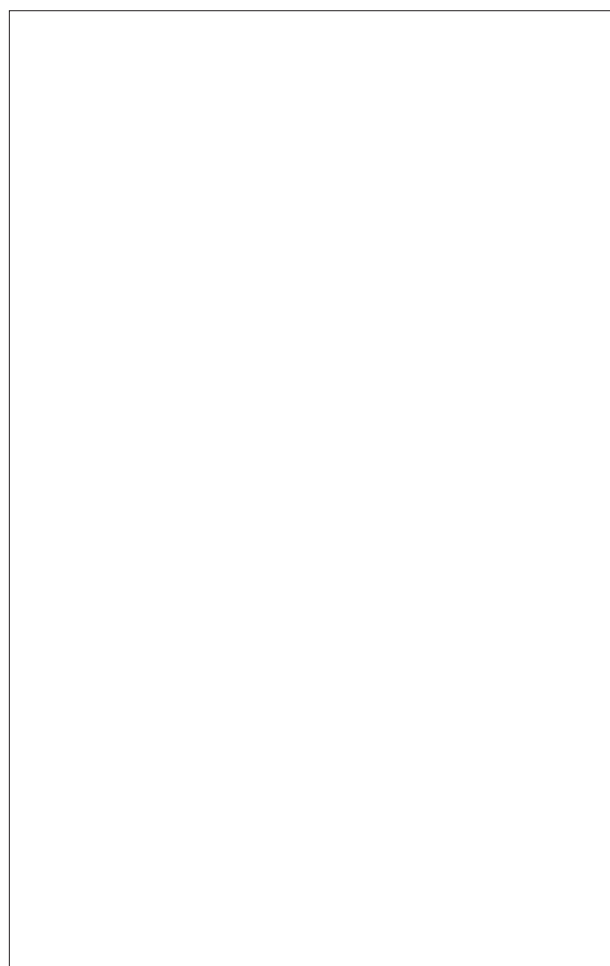
LOOK IN  
A MOLLA O CATENA



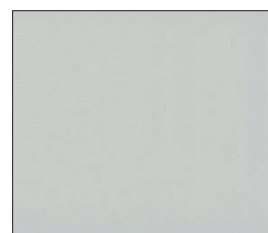
RULLO A MOLLA  
CON O SENZA  
CASSONETTO



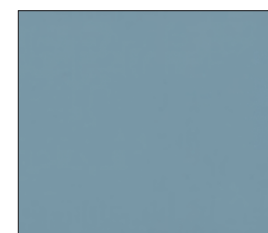
RULLO AD ARGANELLO  
CON O SENZA  
CASSONETTO



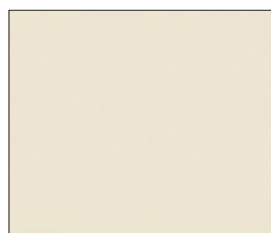
**TI.001**  
Bianco



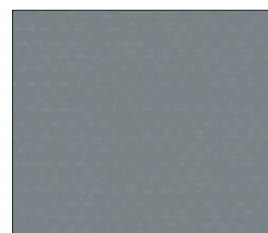
**TI.002**  
Grigio chiaro



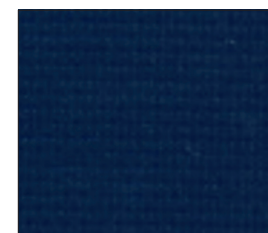
**TI.010**  
Azzurro



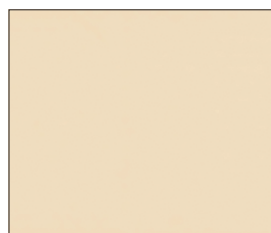
**TI.004**  
Avorio



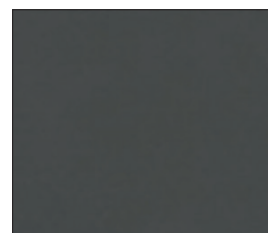
**TI.013**  
Grigio scuro



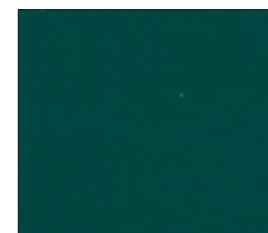
**TI.033**  
Blu



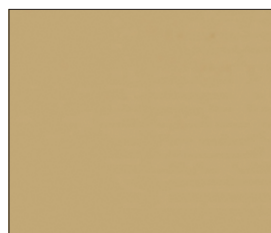
**TI.003**  
Daino



**TI.014**  
Antracite



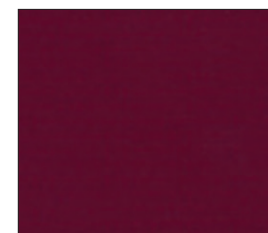
**TI.011**  
Verde scuro



**TI.006**  
Sabbia



**TI.005**  
Nero



**TI.012**  
Vinaccia

# GIRASOLE OSCURANTE

**DESCRIZIONE MATERIALE**  
Description of the material  
Beschreibung des Materials

25 % FIBRA DI VETRO - 75 % PVC  
25 % fiberglass - 75 % PVC  
25 % fiberglass - 75 % PVC

**PESO (g/mq.)**  
Weight (g/mq.)  
Gewicht (g/mq.)

407 ca.

**SPESSORE (mm.)**  
Thickness (mm.)  
Dicke (mm.)

0,25 - 0,33

**LARGHEZZA TESSUTO**  
Fabric width  
Stoffbreite

183 cm.

**COMPORAMENTO ALLA FIAMMA**  
Fire reaction  
Feuerverhalten

IGNIFUGO CLASSE 1  
Class 1 fire-retardant  
Feuerhemmend Klasse 1



**MANUTENZIONE**  
Maintenance  
Wartung

PULIRE CON PANNINO UMIDO  
Clean with damp cloth  
Mit einem feuchten Lappen reinigen

**STABILITÀ ALLA LUCE**  
Light fastness  
Lichtechtheit

6 (UNI EN ISO 105-B02)

**COMPORAMENTO AL CALORE**  
Behaviour to the heat  
Warmereflektion

COLOR ± 2%	R **	T **	A **
TI.001	73	0	27
TI.004	73	0	27
TI.003	63	0	37
TI.006	51	0	49
TI.010	63	0	37
TI.033	51	0	49

\*\* R= Riflessione; T= Trasmissione; A= Assorbimento

**COMPORAMENTO AL CALORE**  
Behaviour to the heat  
Warmereflektion

COLOR ± 2%	R **	T **	A **
TI.002	63	0	37
TI.013	51	0	49
TI.014	51	0	49
TI.005	51	0	49
TI.012	51	0	49
TI.011	51	0	49