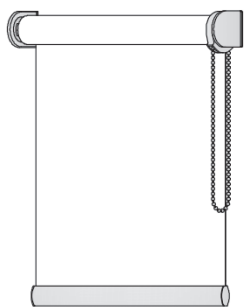


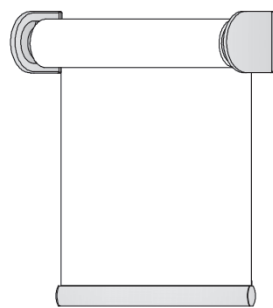


USO INTERNO

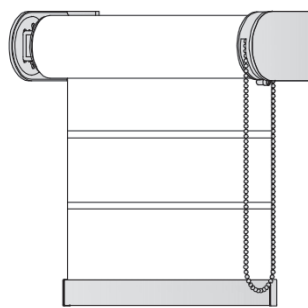
# MICROTEX FILTRANTE



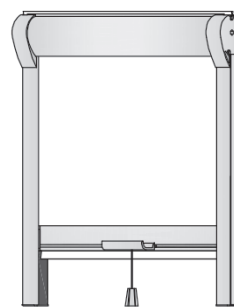
RULLO A CATENA  
CON O SENZA  
CASSONETTO



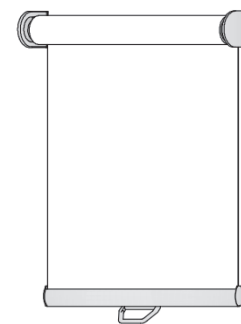
RULLO A MOTORE  
CON O SENZA  
CASSONETTO



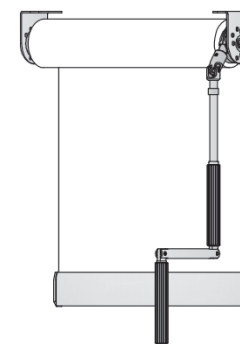
RULLO 70 XL  
A CATENA O MOTORE  
CON O SENZA  
CASSONETTO



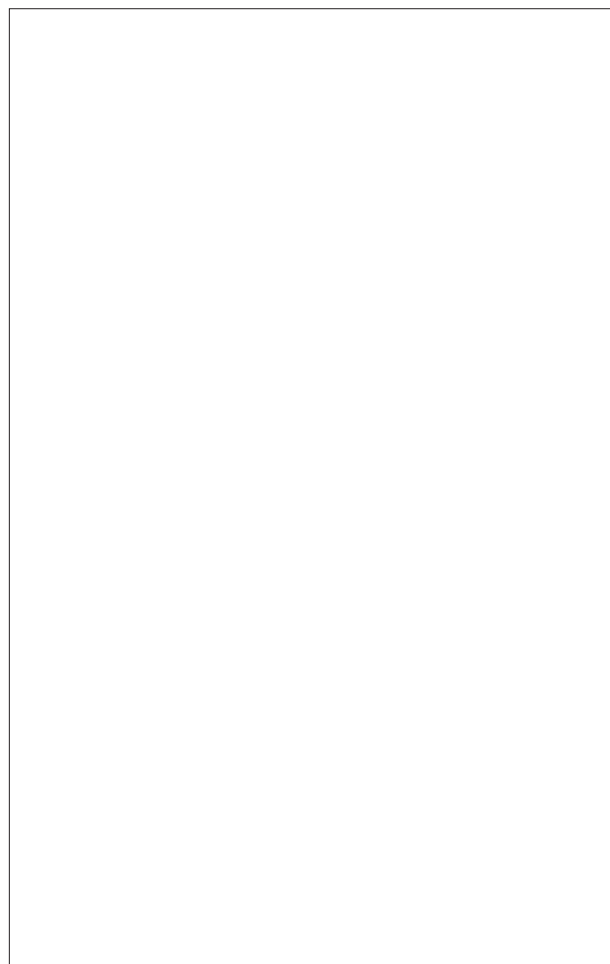
LOOK IN  
A MOLLA O CATENA



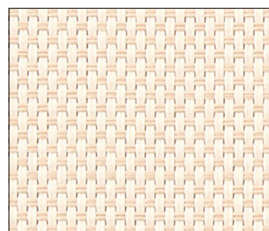
RULLO A MOLLA  
CON O SENZA  
CASSONETTO



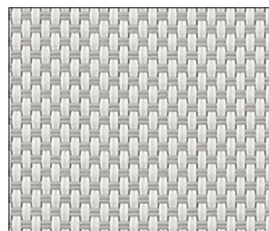
RULLO AD ARGANELLO  
CON O SENZA  
CASSONETTO



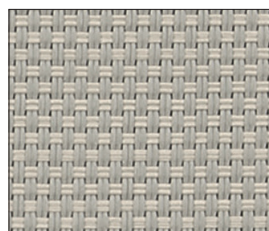
**CT.0202**  
Bianco naturale



**CT.0208**  
Avorio/Bianco



**CT.0207**  
Grigio/Bianco



**CT.0708**  
Grigio



**CT.1010**  
Nero

# MICROTEX FILTRANTE

## DESCRIZIONE MATERIALE

Description of the material  
Beschreibung des Materials

29 % POLIESTERE - 71 % PVC  
29 % Polyester - 71 % PVC  
29 % Polyester - 71 % PVC

## PESO (g/mq.)

Weight (g/mq.)  
Gewicht (g/mq.)

420 ca.

## SPESSORE (mm.)

Thickness (mm.)  
Dicke (mm.)

0,45 ca.

## LARGHEZZA TESSUTO

Fabric width  
Stoffbreite

250 - 320 cm.

## STABILITÀ ALLA LUCE

Light fastness  
Lichtechtheit

≥ 7 (UNI EN ISO 105-B02)

## COMPORAMENTO ALLA FIAMMA

Fire reaction  
Feuerverhalten

IGNIFUGO CLASSE 1  
Class 1 fire-retardant  
Feuerhemmend Klasse 1



## MANUTENZIONE

Maintenance  
Wartung

PULIRE CON PANNINO UMIDO  
Clean with damp cloth  
Mit einem feuchten Lappen reinigen

## FATTORE DI APERTURA

Openness factor  
Faktor von Öffnung

± 1%



INDOOR  
comfort



EASY  
maintenance



ENERGY  
saving



LEAD  
FREE

## COMPORAMENTO AL CALORE

Behaviour to the heat  
Warmereflektion

COLOR ± 2%	R **	T **	A **
CT.0202	66,2	20,7	13,1
CT.0208	59,1	17,9	23
CT.0207	48,9	14,7	36,4

\*\* R= Riflessione; T= Trasmissione; A= Assorbimento

## COMPORAMENTO AL CALORE

Behaviour to the heat  
Warmereflektion

COLOR ± 2%	R **	T **	A **
CT.0708	39,7	7,7	52,6
CT.1010	6,2	3,2	90,6