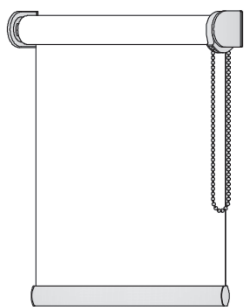




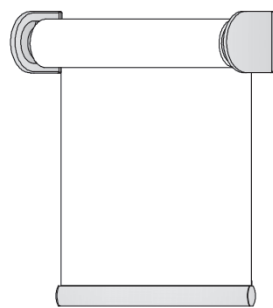
USO INTERNO

PRESTIGE B.O. OSCURANTE

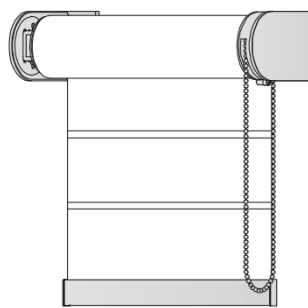
PRESTIGE
B.O.
oscurante



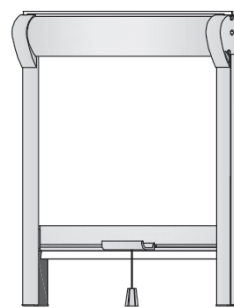
RULLO A CATENA
CON O SENZA
CASSONETTO



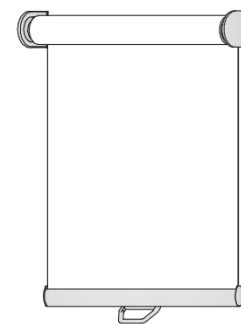
RULLO A MOTORE
CON O SENZA
CASSONETTO



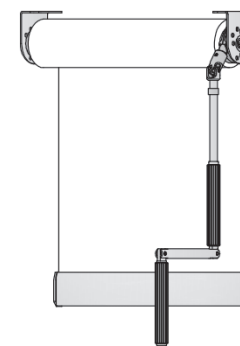
RULLO 70 XL
A CATENA O MOTORE
CON O SENZA
CASSONETTO



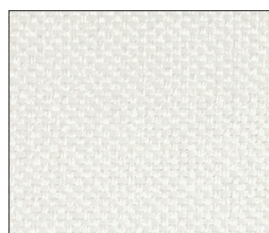
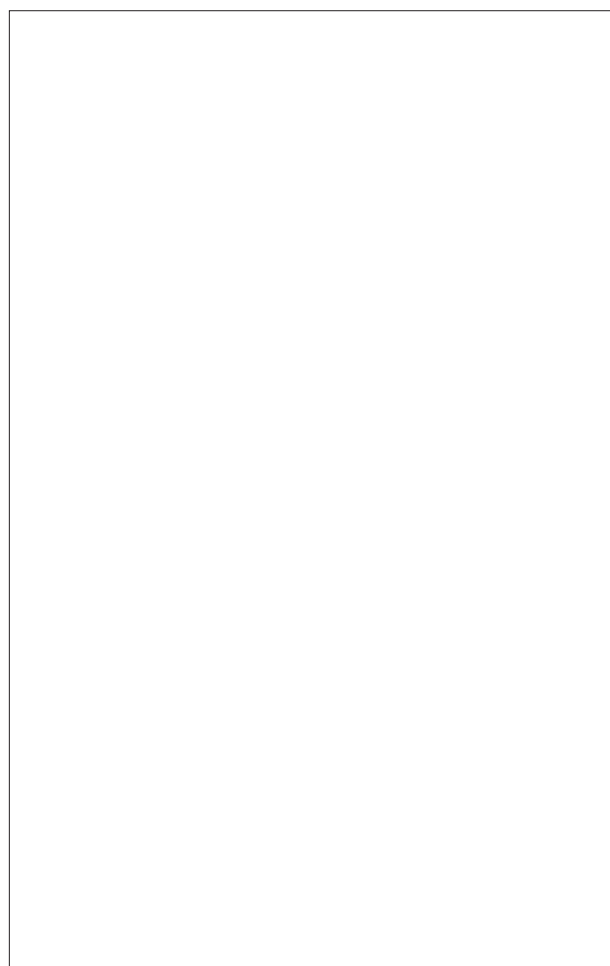
LOOK IN
A MOLLA O CATENA



RULLO A MOLLA
CON O SENZA
CASSONETTO



RULLO AD ARGANELLO
CON O SENZA
CASSONETTO



MW.510957
Bianco



MW.57184
Tortora



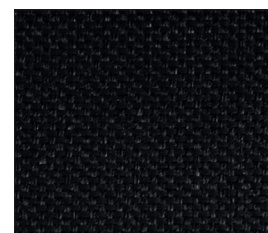
MW.510958
Beige



MW.57183
Antracite



MW.57174
Marrone chiaro



MW.57172
Nero

Il lato tessuto si intende vista interno stanza,
mentre quello spalmato si intende vista esterna

PRESTIGE B.O. OSCURANTE

DESCRIZIONE MATERIALE

Description of the material
Beschreibung des Materials

100 % POLIESTERE (TREVIRA CS)
100 % Polyester (Trevira cs)
100 % Polyester (Trevira cs)

PESO (g/mq.)

Weight (g/mq.)
Gewicht (g/mq.)

280 (colori: MW.57183 - MW.57172)
340 (colori: MW.510957 - MW.510958 -
MW.57174 - MW.57184)

SPESSORE (mm.)

Thickness (mm.)
Dicke (mm.)

0,40 (colori: MW.57183 - MW.57172)
0,47 (colori: MW.510957 - MW.510958 -
MW.57174 - MW.57184)

LARGHEZZA TESSUTO

Fabric width
Stoffbreite

305 cm.

COMPORAMENTO ALLA FIAMMA

Fire reaction
Feuerverhalten

IGNIFUGO CLASSE 1
Class 1 fire-retardant
Feuerhemmend Klasse 1



MANUTENZIONE

Maintenance
Wartung

PULIRE CON PANNINO UMIDO
Clean with damp cloth
Mit einem feuchten Lappen reinigen

STABILITÀ ALLA LUCE

Light fastness
Lichtechtheit

≥ 5/6 (UNI EN ISO 105-B02)



COMPORAMENTO ALLA LUCE

Behaviour to the light
Lichtreflektion

COLOR ± 2%	R **	T **	A **
MW.510957	82	0	18
MW.510958	61	0	39
MW.57174	15	0	85
MW.57184	34	0	66
MW.57183	16	0	84
MW.57172	8	0	92

** R= Riflessione; T= Trasmissione; A= Assorbimento

COMPORAMENTO AL CALORE

Behaviour to the heat
Warmereflektion

COLOR ± 2%	R **	T **	A **
MW.510957	69	0	31
MW.510958	52	0	48
MW.57174	15	0	85
MW.57184	30	0	70
MW.57183	14	0	86
MW.57172	7	0	93