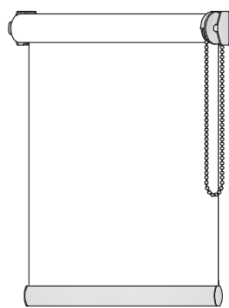


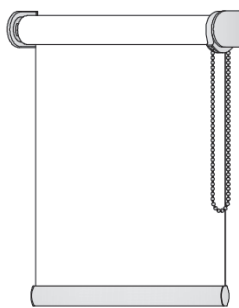


USO INTERNO

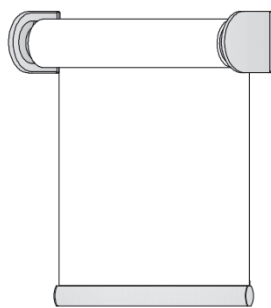
# PRESTIGE FILTRANTE



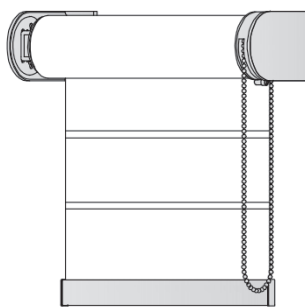
RULLO XS  
A CATENA O MOLLA



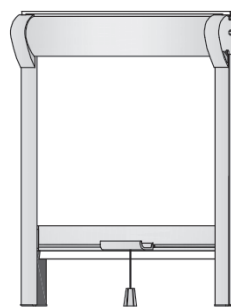
RULLO A CATENA  
CON O SENZA  
CASSONETTO



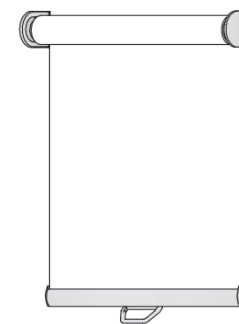
RULLO A MOTORE  
CON O SENZA  
CASSONETTO



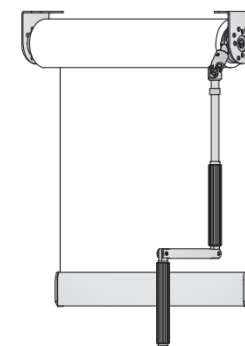
RULLO 70 XL  
A CATENA O MOTORE  
CON O SENZA  
CASSONETTO



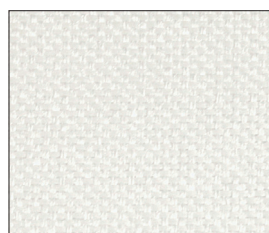
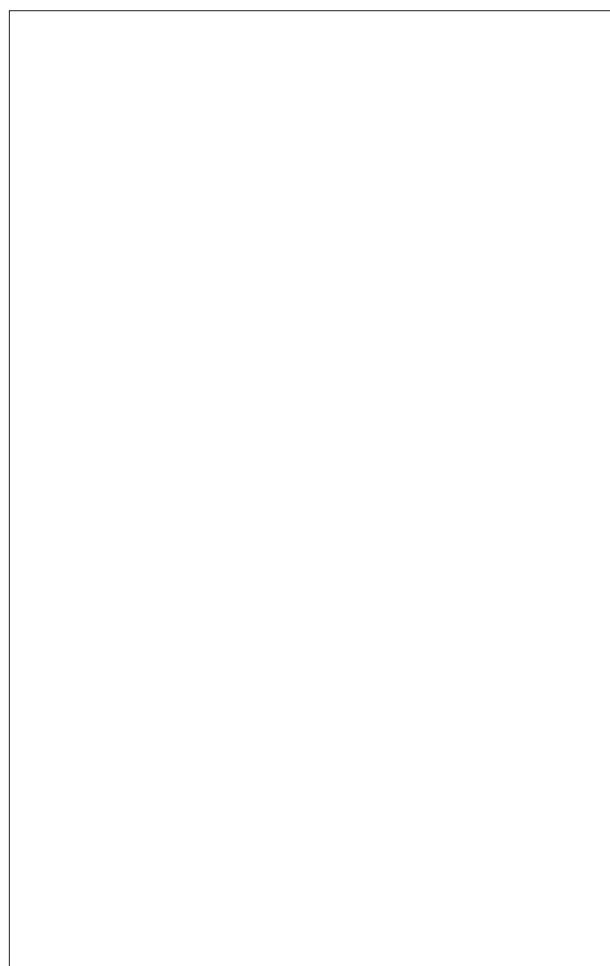
LOOK IN  
A MOLLA O CATENA



RULLO A MOLLA  
CON O SENZA  
CASSONETTO



RULLO AD ARGANELLO  
CON O SENZA  
CASSONETTO



**MV.7169**  
Bianco



**MV.7184**  
Tortora



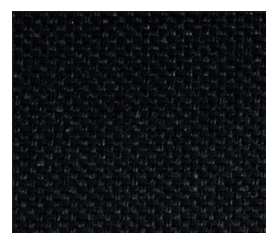
**MV.10025**  
Beige



**MV.7183**  
Antracite



**MV.7174**  
Marrone chiaro



**MV.7172**  
Nero

# PRESTIGE FILTRANTE

**DESCRIZIONE MATERIALE**  
Description of the material  
Beschreibung des Materials

100 % POLIESTERE (TREVIRA CS)  
100 % Polyester (Trevira cs)  
100 % Polyester (Trevira cs)

**PESO (g/mq.)**  
Weight (g/mq.)  
Gewicht (g/mq.)

160 ca.

**SPESSORE (mm.)**  
Thickness (mm.)  
Dicke (mm.)

0,37 ca.

**LARGHEZZA TESSUTO**  
Fabric width  
Stoffbreite

305 cm.

**STABILITÀ ALLA LUCE**  
Light fastness  
Lichtechtheit

≥ 5/6 (UNI EN ISO 105-B02)

**COMPORAMENTO ALLA FIAMMA**  
Fire reaction  
Feuerverhalten

IGNIFUGO CLASSE 1  
Class 1 fire-retardant  
Feuerhemmend Klasse 1



**MANUTENZIONE**  
Maintenance  
Wartung

PULIRE CON PANNINO UMIDO  
Clean with damp cloth  
Mit einem feuchten Lappen reinigen

**FATTORE DI APERTURA**  
Openess factor  
Faktor von Öffnung

± 3%



**COMPORAMENTO ALLA LUCE**  
Behaviour to the light  
Lichtreflektion

COLOR ± 2%	R **	T **	A **
MV.7169	62	38	0
MV.10025	60	28	12
MV.7174	21	8	71
MV.7184	31	13	56
MV.7183	17	7	76
MV.7172	4	3	93

\*\* R= Riflessione; T= Trasmissione; A= Assorbimento

**COMPORAMENTO AL CALORE**  
Behaviour to the heat  
Warmereflektion

COLOR ± 2%	R **	T **	A **
MV.7169	63	37	0
MV.10025	62	30	8
MV.7174	44	22	34
MV.7184	48	25	27
MV.7183	42	22	36
MV.7172	34	20	46