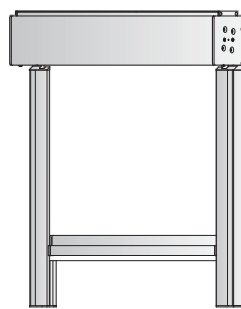


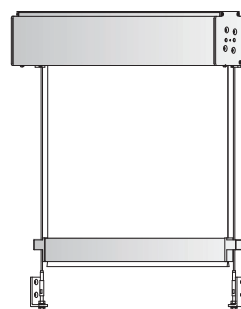


USO ESTERNO

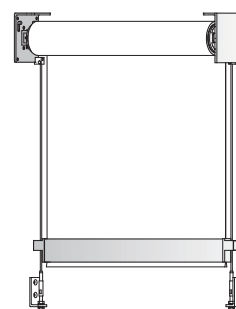
SOLTIS 92 FILTRANTE



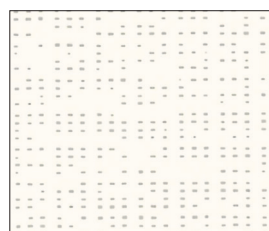
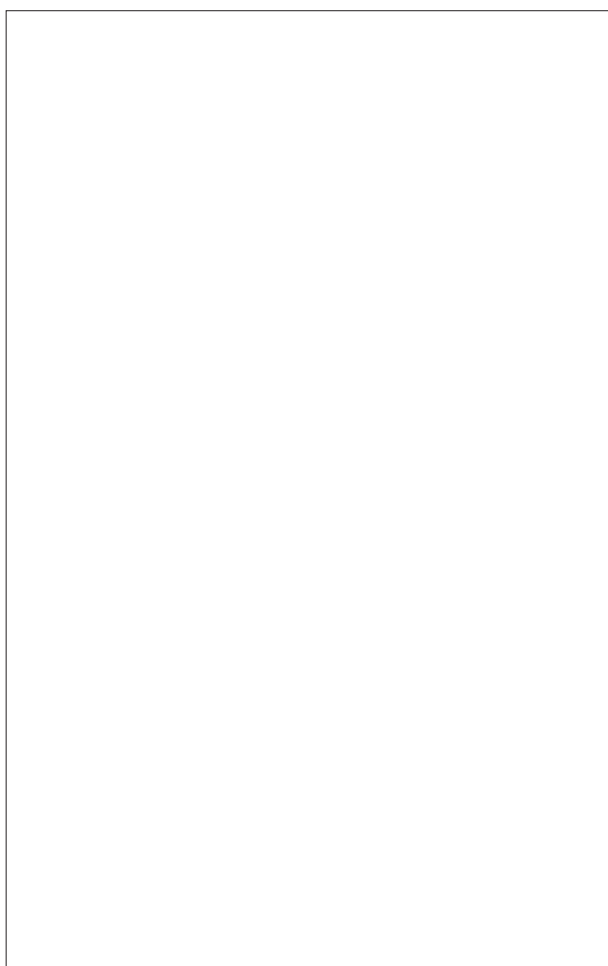
LOOK OUT ZIP
CATENA, ARGANELLO
O MOTORE



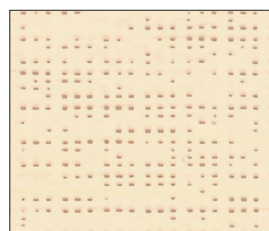
LOOK OUT
CON CAVI IN ACCIAIO
CATENA, ARGANELLO
O MOTORE



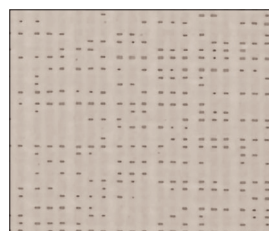
LOOK OUT
SENZA CASSONETTO
CATENA, ARGANELLO
O MOTORE



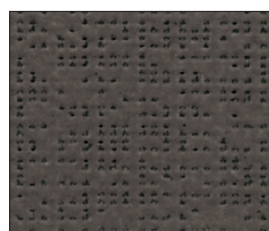
GL.2044
Bianco



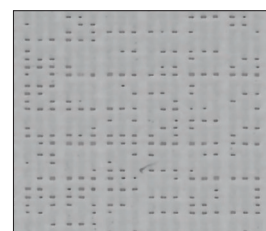
GL.2175
Avorio



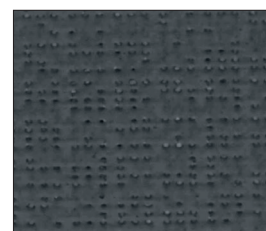
GL.2135
Sabbia



GL.2043
Bronzo



GL.2171
Grigio



GL.2047
Antracite

SOLTIS 92

FILTRANTE

DESCRIZIONE MATERIALE
Description of the material
Beschreibung des Materials

PES + PVC coating

PESO (g/mq.)
Weight (g/mq.)
Gewicht (g/mq.)

420 ca.

SPESSORE (mm.)
Thickness (mm.)
Dicke (mm.)

0,45 ca.

LARGHEZZA TESSUTO
Fabric width
Stoffbreite

267 cm.

COMPORAMENTO ALLA FIAMMA

Fire reaction
Feuerverhalten

IGNIFUGO CLASSE 1
Class 1 fire-retardant
Feuerhemmend Klasse 1



MANUTENZIONE

Maintenance
Wartung

PULIRE CON PANNINO UMIDO
Clean with damp cloth
Mit einem feuchten Lappen reinigen

FATTORE DI APERTURA

Openness factor
Faktor von Öffnung

4%



COMPORAMENTO AL CALORE

Behaviour to the heat
Warmereflektion

COLOR ± 2%	R **	T **	A **
GL.2044	70	20	10
GL.2175	64	19	17
GL.2135	46	9	45

** R= Riflessione; T= Trasmissione; A= Assorbimento

COMPORAMENTO AL CALORE

Behaviour to the heat
Warmereflektion

COLOR ± 2%	R **	T **	A **
GL.2171	43	8	49
GL.2047	8	5	87
GL.2043	12	2	86