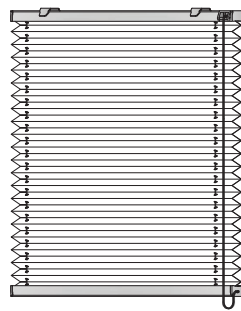


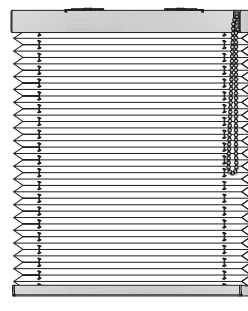


USO INTERNO

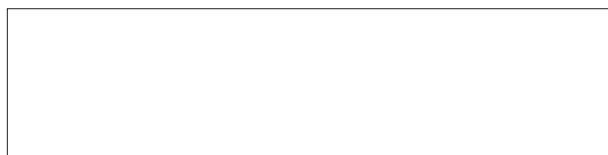
# BRISÈ FILTRANTE



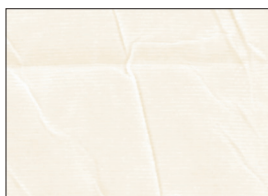
PLISSÈ 20 MM  
A CORDE



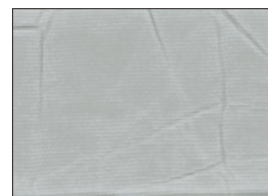
PLISSÈ 20 MM  
A CATENA O MOTORE



Il lato colorato si intende vista interno stanza,  
mentre quello perlato si intende vista esterna



**MU.5174**  
Bianco



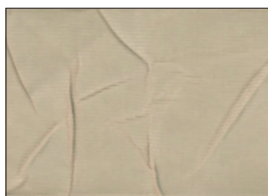
**MU.7004**  
Grigio



**MU.7017**  
Avorio



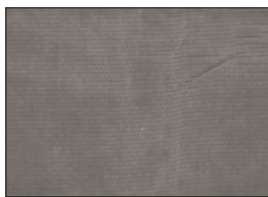
**MU.5178**  
Arancione



**MU.7007**  
Sabbia



**MU.5179**  
Verde



**MU.10453**  
Tortora



**MU.5180**  
Blu

# BRISÈ FILTRANTE

## DESCRIZIONE MATERIALE

Description of the material  
Beschreibung des Materials

100 % POLIESTERE  
100 % Polyester  
100 % Polyester

## PESO (g/mq.)

Weight (g/mq.)  
Gewicht (g/mq.)

100 ca.

## SPESSORE (mm.)

Thickness (mm.)  
Dicke (mm.)

0,5 ca.

## LARGHEZZA TESSUTO

Fabric width  
Stoffbreite

220 cm.

## COMPORAMENTO ALLA FIAMMA

Fire reaction  
Feuerverhalten

IGNIFUGO B1  
B1 fire-retardant  
Feuerhemmend B1



## MANUTENZIONE

Maintenance  
Wartung

PULIRE CON PANNINO UMIDO  
Clean with damp cloth  
Mit einem feuchten Lappen reinigen

## STABILITÀ ALLA LUCE

Light fastness  
Lichtechtheit

≥ 5/6 (UNI EN ISO 105-B02)



## COMPORAMENTO ALLA LUCE

Behaviour to the light  
Lichtreflektion

COLOR ± 2%	R **	T **	A **
MU.5174	62	38	0
MU.7017	64	36	0
MU.7007	59	23	18
MU.10453	45	10	45
MU.7004	60	21	19
MU.5178	62	26	12
MU.5179	56	28	16
MU.5180	44	7	49

\*\* R= Riflessione; T= Trasmissione; A= Assorbimento

## COMPORAMENTO AL CALORE

Behaviour to the heat  
Warmereflektion

COLOR ± 2%	R **	T **	A **
MU.5174	60	39	1
MU.7017	62	38	0
MU.7007	58	33	9
MU.10453	51	27	22
MU.7004	59	29	12
MU.5178	60	32	8
MU.5179	56	35	9
MU.5180	54	27	19