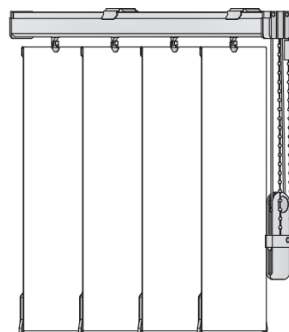


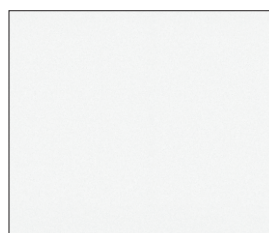
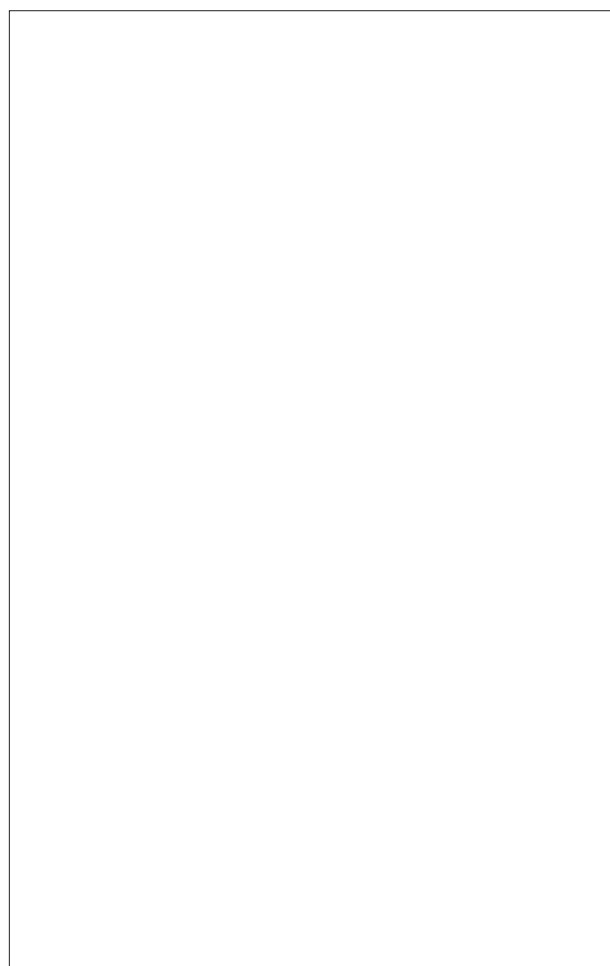
USO INTERNO

GIRASOLE OSCURANTE

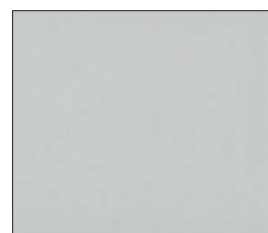
GIRASOLE
oscurante



VERTICALE 127 MM



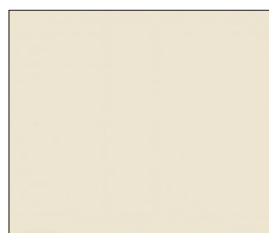
TI.001
Bianco



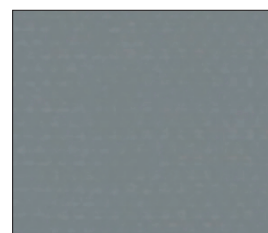
TI.002
Grigio chiaro



TI.010
Azzurro



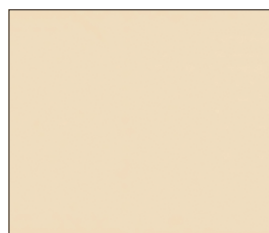
TI.004
Avorio



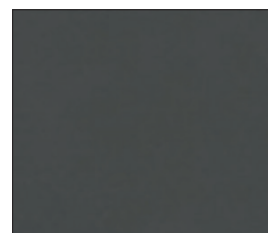
TI.013
Grigio scuro



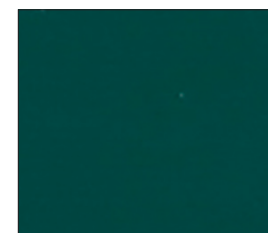
TI.033
Blu



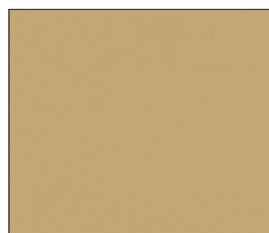
TI.003
Daino



TI.014
Antracite



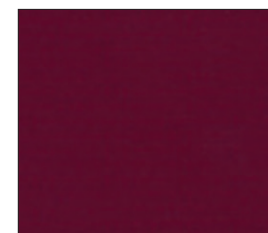
TI.011
Verde scuro



TI.006
Sabbia



TI.005
Nero



TI.012
Vinaccia

GIRASOLE OSCURANTE

DESCRIZIONE MATERIALE
Description of the material
Beschreibung des Materials

25 % FIBRA DI VETRO - 75 % PVC
25 % fiberglass - 75 % PVC
25 % fiberglass - 75 % PVC

PESO (g/mq.)
Weight (g/mq.)
Gewicht (g/mq.)

407 ca.

SPESSORE (mm.)
Thickness (mm.)
Dicke (mm.)

0,25 - 0,33

LARGHEZZA TESSUTO
Fabric width
Stoffbreite

12,7 cm.

COMPORAMENTO ALLA FIAMMA
Fire reaction
Feuerverhalten

IGNIFUGO CLASSE 1
Class 1 fire-retardant
Feuerhemmend Klasse 1



MANUTENZIONE
Maintenance
Wartung

PULIRE CON PANNINO UMIDO
Clean with damp cloth
Mit einem feuchten Lappen reinigen

STABILITÀ ALLA LUCE
Light fastness
Lichtechtheit

6 (UNI EN ISO 105-B02)

COMPORAMENTO AL CALORE
Behaviour to the heat
Warmereflektion

COLOR ± 2%	R **	T **	A **
TI.001	73	0	27
TI.004	73	0	27
TI.003	63	0	37
TI.006	51	0	49
TI.010	63	0	37
TI.033	51	0	49

COMPORAMENTO AL CALORE
Behaviour to the heat
Warmereflektion

COLOR ± 2%	R **	T **	A **
TI.002	63	0	37
TI.013	51	0	49
TI.014	51	0	49
TI.005	51	0	49
TI.012	51	0	49
TI.011	51	0	49

** R= Riflessione; T= Trasmissione; A= Assorbimento